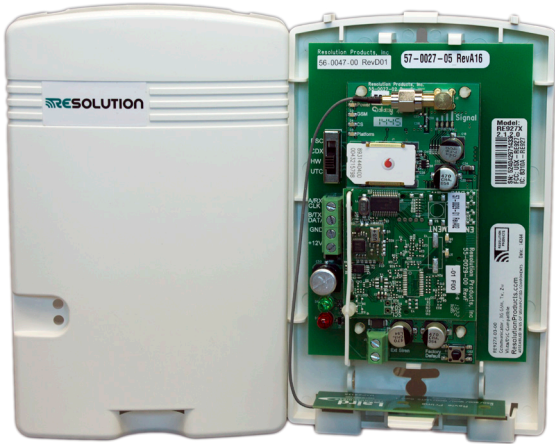



RE927 Series: GSM Interactive Gateway Module





Interactive services powered by **SECURENET**

Don't let existing accounts with aging systems disappear. Retain your accounts by upgrading them to full interactive services. Simply add the Resolution Interactive Gateway Module (IGM) to a Honeywell Vista™, DSC PowerSeries™, Interlogix Concord® or NX® panel. Unlike other cellular modules, the Resolution IGM provides smart phone-based security and Z-Wave home automation control of locks, lights and appliances. Keep your existing accounts healthy and active with new technology from Resolution. The RE927 series of gateways incorporate a toggle switch allowing the technician to field configure the device based on the type of system it is installed on. This minimizes inventory requirements for the dealer and technician vehicles. The SIM card also automatically determines the optimal cellular network automatically switching between T-Mobile & AT&T based on network coverage.

KEY FEATURES

 Complete home automation services through Z-Wave connected devices

 Full Smart Phone and Tablet security on Apple & Android platforms (iOS 5.1 & above, Android 3.0 & above, Windows 8.0 & above) and home automation for existing panels

 Field configurable for panel compatibility. Full central station reporting.

Compatible with:

- Concord & NX-4, NX-6, NX-8
- Honeywell Vista 15p and 20p, versions 3.0 & later (RE927X)
- DSC PowerSeries (PC580, PC1555, PC1555MX, PC1616, PC1832, PC1864, PC5010, PC5015, & PC5020 (RE927X)
- GE Simon XT and XTi (RE927S)

Specification Table

Cellular	3G GSM 1xRTT
Current Draw	120 mA Nominal, 2A peak
Temperature Range	0F to 120F

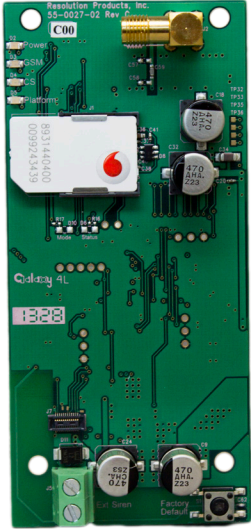
Specifications subject to change without notice.

Further device features:

Ethernet, Wi-Fi & Cellular options available. Field configurable for panel compatibility. New services to existing customers without replacing the panel. Reduced account attrition rates.

Warranty: Resolution Products, Inc. will replace products that are defective in their first five (5) years.

Helix™ Compatible GSM Expansion Card

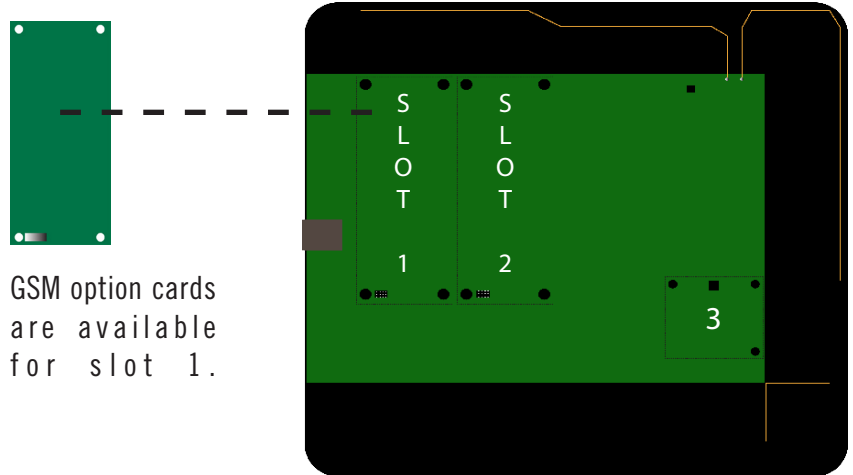


Interactive services powered by **SECURENET**

For Helix systems installed in locations without broadband network access, you can install a CDMA communicator card. This device can be used as primary or back-up communications for Helix, delivering support for all Helix services including alarm reporting, home automation features, and interactive arming support. If Helix is connected over broadband, IP will be used for primary communications. Should the network be unavailable, Helix will automatically transfer services to the cellular link until the network services are restored.

Compatible with:

- Resolution CryptiX™



GSM option cards are available for slot 1.

KEY FEATURES



Delivers all Helix capabilities over Wi-Fi networks including applicable home automation features



Provides automatic back-up of alarm reporting and interactive services when IP connection is present



The expansion card is fully integrated into Helix, including the antenna, and leverages the power supply and back-up battery from the Helix system Plug and play ready. No extra programming or configuration required.

Specification Table

Cellular	3G GSM 1xRTT
Current Draw	120 mA Nominal, 2A peak
Temperature Range	0F to 120F

Specifications subject to change without notice.

Warranty: Resolution Products, Inc. will replace products that are defective in their first five (5) years.