

RE926 Series: Wi-Fi Interactive Gateway Module



Interactive services powered by **SECURENET**

Don't let existing accounts with aging systems disappear. Retain your accounts by upgrading them to full interactive services. Simply add the Resolution Interactive Gateway Module (IGM) to a Honeywell Vista™, DSC PowerSeries™, Interlogix Concord® or NX® panel. Unlike other cellular modules, the Resolution IGM provides smart phone-based security and Z-Wave home automation control of locks, lights and appliances. Keep your existing accounts healthy and active with new technology from Resolution. The RE927 series of gateways incorporate a toggle switch allowing the technician to field configure the device based on the type of system it is installed on. This minimizes inventory requirements for the dealer and technician vehicles.

KEY FEATURES



Complete home automation services through Z-Wave connected devices



Full Smart Phone and Tablet security on Apple & Android platforms (iOS 5.1 & above, Android 3.0 & above, Windows 8.0 & above) and home automation for existing panels



Field configurable for panel compatibility. Full central station reporting.

Compatible with:

- Concord & NX-4, NX-6, NX-8
- Honeywell Vista 15p and 20p, versions 3.0 & later (RE926X)
- DSC PowerSeries (PC580, PC1555, PC1555MX, PC1616, PC1832, PC1864, PC5010, PC5015, & PC5020 (RE926X)
- GE Simon XT and XTi (RE926S)

Specification Table

Wi-Fi	Local Network
Current Draw	120 mA Nominal, 2A peak
Temperature Range	0F to 120F

Specifications subject to change without notice.

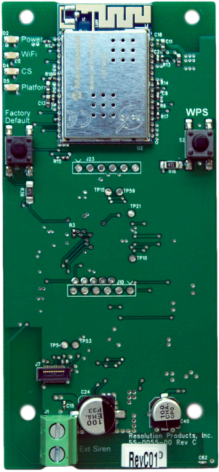
Further device features:

Ethernet, Wi-Fi & Cellular options available. Field configurable for panel compatibility. New services to existing customers without replacing the panel. Reduced account attrition rates.

Warranty: Resolution Products, Inc. will replace products that are defective in their first five (5) years.

Helix™ Compatible Wi-Fi Expansion Card

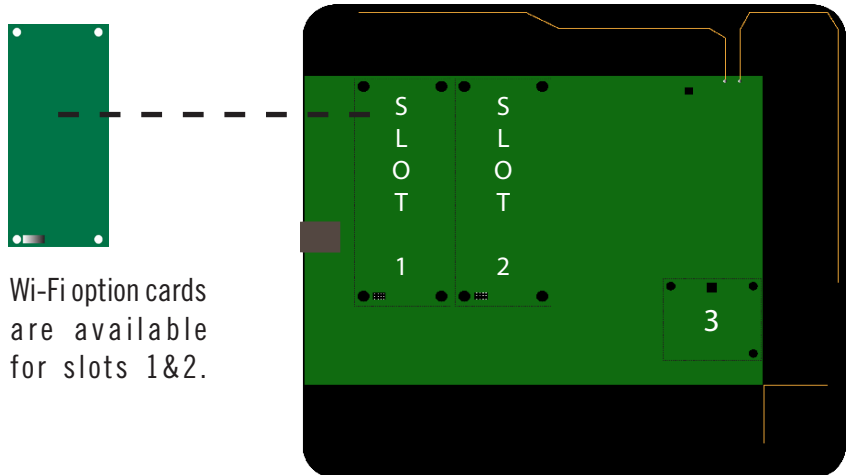
Interactive services powered by **SECURENET**



For Helix systems installed in locations where a physical Ethernet connection can not be used, you can add a Wi-Fi expansion card. This will allow Helix to join any access point in the home/business. The RE9XXX card provides alarm reporting, interactive security services and home automation features over this broadband connection. The Wi-Fi expansion card can be combined with an RE927 or RE928 module for dual path reporting if desired.

Compatible with:

- Resolution CryptiX™



KEY FEATURES



Delivers all Helix capabilities over Wi-Fi networks including applicable home automation features



Provides automatic back-up of alarm reporting and interactive services when IP connection is present



The expansion card is fully integrated into Helix, including the antenna, and leverages the power supply and back-up battery from the Helix system Plug and play ready. No extra programming or configuration required.

Specification Table

Wi-Fi	802.11 b/g/n with WPS
Current Draw	120 mA Nominal, 2A peak
Temperature Range	0F to 120F

Specifications subject to change without notice.

Warranty: Resolution Products, Inc. will replace products that are defective in their first five (5) years.